

# ACT 446 Dual Cable Location Protectors

## Surge Protector System



ACT 446-150-410 with 446M back plate option

### ▶ ACT 446 Dual Cable Location Outdoor/Indoor Protectors

The ACT446 as part of the ACT 44X Cable Locating Protection Family can be installed both indoors or outdoor applications. The solid-state hybrid surge protection system is installed between the cable sheath and earth ground. There primary function is to increase the cable locating tone range and efficiency and protect buried cable and personnel from high-energy surges. This unit may be installed either underground (waterproof), above ground (weather proof) or pedestal Mount. Proper installation and location of these devices allows greater than 75 miles of cable location from one transmitter.

### ▶ RECOMMENDED LOCATIONS

- Buried Fiber Locations
- Pedestal Locations
- Indoor Locations

### ▶ FEATURES AND BENEFITS

- Extends Cable Locations over 75 miles
- MOV/Gas Tube Hybrid Technology
- 5-Year Standard Warranty

### ▶ STANDARDS MET

- Safety – Meets UL497
- ANSI/IEEE C62.41, C62.45

### ▶ 3RD PARTY TESTED

### ▶ PART NUMBERS

Model	Enclosure Type	System
ACT446-XXX-	212	Dual Protector in Weatherproof enclosure with shorting bar 4"x4"x2" Enclosure
ACT446-XXX-	302	Dual protector for Waterproof (Potted) with 6' 6 awg cable stubs 4"x4"x2" Enclosure
ACT446-XXX-	312	Dual Protector Waterproof (Potted) enclosure with shorting bar 4"x4"x2" Enclosure
ACT446-XXX-	400	Dual Protector for pedestal mount 3"x3"x2" Enclosure Comes WITHOUT shorting bar
ACT446-XXX-	410	Dual Protector with shorting bar for pedestal mount 3"x3"x2" Enclosure

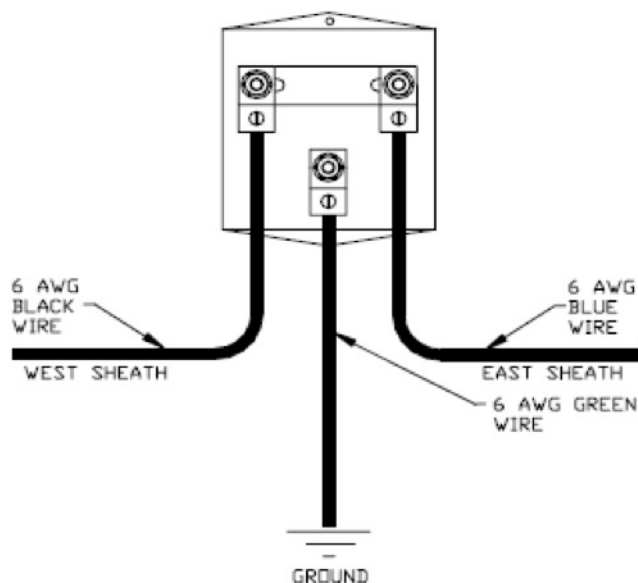
Part Number Example: ACT 446-150-410  
\*Custom voltage and cable configurations are available

**ACT 446M is optional mounting plate available for ACT 446 - 400 series products**

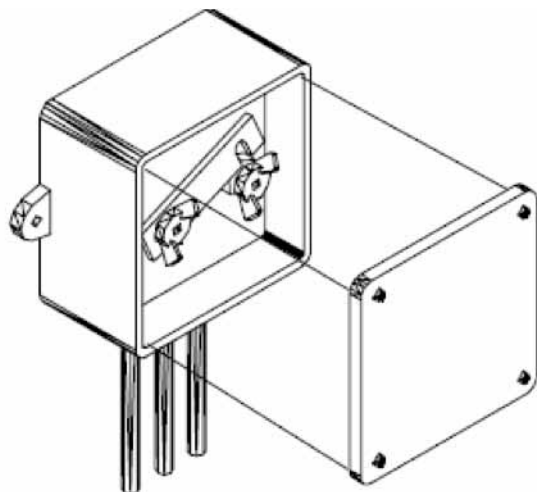
# ACT 446 Dual Cable Location Protectors

Surge Protector System

## ACT 446-150-410 – Pedestal Mount



## Weather Proof Enclosure



**ACT 446-XXX-212**

## TECHNICAL INFORMATION

### ► PHYSICAL SPECIFICATIONS

The ACT446-XXX-2YZ family is installed in 4"x4"x 2" weather resistant enclosures.

The ACT 446-XXX-30Z family are installed in 4"x4"x2" waterproof closures.

The ACT 446-XXX-4YZ families are installed in a 3"x3"x2" indoor enclosure- requires installation inside a pedestal if installed outside

#### XXX

Option signifies voltage application (050, 150, 350V)

#### Y

Option "0" No Shorting bar, "1" With shorting bar

#### Z

Option "0" No cable; "2" 6 foot of 6 awg stranded cable (Black & Green)

### ► ELECTRICAL SPECIFICATIONS

Voltage Applications RMS:	50, 150V, 350V
Clamping Voltage (@ 1mA DC): (+10% voltage variance)	95V, 210, 430V
Peak Current (8x20μS):	42,000 Amps
Energy Dissipation (10x1000μS):	1600 joules
Response Time:	1.5 Nanoseconds
Capacitance @ 5KHz:	4004pf

**ACT 446M option is a 16 awg aluminum back mounting plate for the ACT 446-150-410 module. Mounting Plate sold separately.**